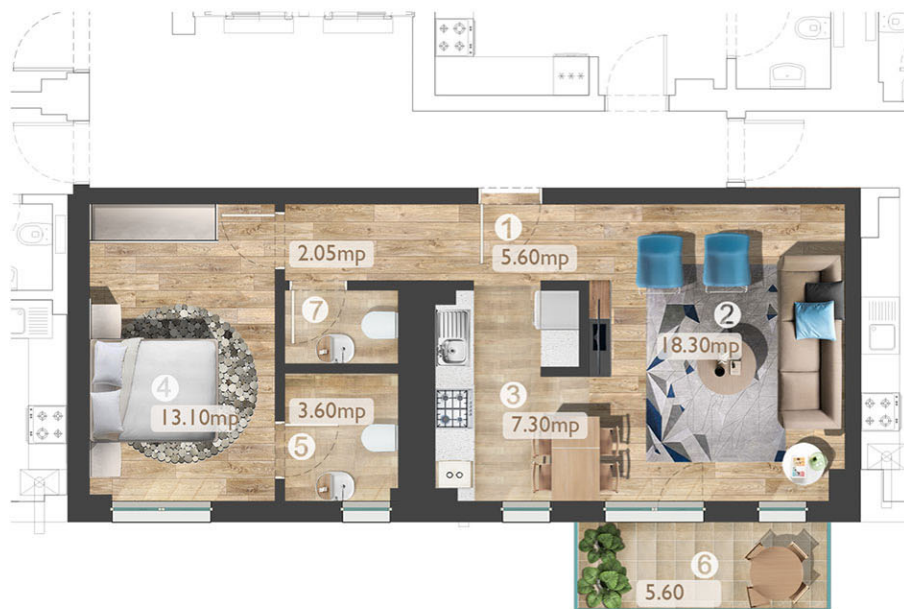


- 1-HOL ACCES
- 2-CAMERA DE ZI
- 3-BUCATARIE
- 4-DORMITOR M.
- 5-BAIE
- 6-TERASA
- 7-BAIE



SUPR. UTILA AP.	50.00mp
SUPR. CONSTR. AP.	61,60 mp
SUPR. CONSTR. TERASA	5,60 mp
TOTAL	67,20 mp